

Now it's easier to **eat the foods you love** while you lose weight with **over 150 selections—including over 50 NEW foods!** Nutrisystem combines the proven science of low-Glycemic Index "good carbs" with high fiber to help you **stay fuller longer.** It's smart, sensible weight loss, and a great value!



*Results not typical. On Nutrisystem, you can expect to lose at least 1-2 lbs. per week. Individuals are remunerated. On Nutrisystem you add in fresh grocery items.

GET AN EXTRA \$50 OFF

That's \$25 off your first order and \$25 off your second order when you select a 28-Day Auto-Delivery Program!†

Call **1-877-910-DIET (3438)**
or click nutrisystem.com/redfsi1810

Money Back Guarantee!

Try our food! If you don't like it, call within 7 days of receipt of your first order and return the remaining three weeks of food for a full refund of the purchase price, less shipping. Call or see website for details.

†Offer good on new 28-Day Auto-Delivery programs. Offer not valid on Flex and Select (fresh-frozen) programs. Free shipping to Continental U.S. only. \$25 discount will be applied to your first and second consecutive deliveries. With Auto-Delivery, you are automatically charged and shipped your 28-Day program once every 4 weeks unless you cancel. You can cancel Auto-Delivery at any time by calling 1-800-727-8046. However for this offer you must stay on Auto-Delivery for at least two consecutive 28-Day program deliveries to receive the second \$25 discount. Other restrictions apply. Call or see website for details. Cannot be combined with any prior or current discount or offer. Limit one offer per customer. ©2010 Nutrisystem, Inc. All rights reserved.

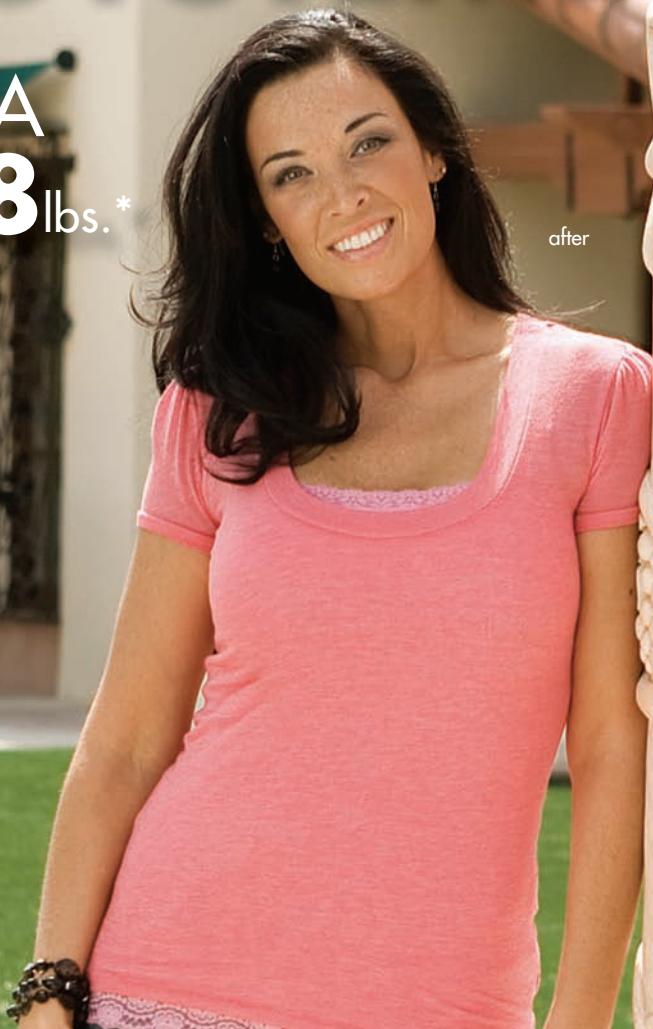
Nutrisystem®

LOSE WEIGHT WITH NUTRISYSTEM!



before

TINA
LOST **38** lbs.*



after

- Over 150 delicious foods to choose from
- Created with "good carbs" and high fiber
- No counting calories, carbs or points
- FREE online membership and weight loss counseling
- FREE delivery straight to your door†

All for as low as \$3 a meal!†